

■ **EXCEPTIONALLY FAST**

The Spirit 115, two speed roll-up door operates at speeds of up to 42"/sec.

■ **ULTIMATE RELIABILITY**

Reliable, low maintenance operator with an in-line, high efficiency electric gear brake motor. Gear train is sealed and lubricated for life. Long-life counterweight system eliminates tension springs in barrel. The uncomplicated low stress counterbalance system, integrated into the door design, helps balance the curtain and bottom rail assembly for smooth operation while reducing motor and gear train wear.

■ **INNOVATIVE DESIGN**

If accidentally impacted, our quick and easy Flex-Tab™ reset system enables the curtain and bottom bar to be set back into place in under 30 seconds. No tools needed...No side cover to open...No costly door damage...No downtime. Our programmable logic controls and time delay close feature allow you to tailor the door's operation to your specific needs.

■ **RUGGED CONSTRUCTION**

Puncture resistant PVC impregnated woven polyester fabric curtain with optional clear vision panel and integral curtain stiffeners withstands drafts and pressure differentials. Galvanized side covers and bottom bar further ensure long life for the door. Also available with stainless steel package and barrel shroud.

■ **SUPERIOR PERFORMANCE**

A built in recessed mini-beam system is designed to detect objects in the door's path and initiate instant reversal. Sensitive SofTouch™ electronic reversing edge is installed in the curtain bottom rail assembly as well. To meet emergency egress (i.e., power failure), a manual release is standard on both sides of the door for easy opening.

■ **CUSTOM SYSTEMS**

Marathon door systems are designed and precision manufactured to your specifications at our corporate location in Milwaukee, Wisconsin. We are able to accommodate a variety of applications and special requests. Whether it is a custom color, a special window configuration, activation requirement or, a size that defies standard offerings, we can build a door that will compliment your building's design.

MODEL 115

SPiRiT™ High Speed
Interior Fabric Roll-Up Door

MODEL 115 POWER



Shown with optional vision panel and bollard.

Innovative Design. Superior Performance. Exceptional Value.

MARATHON HIGH PERFORMANCE DOORS, DESIGNED FOR THE LONG RUN.

At Marathon, meeting your facility's requirements is our business. With over 40 years of design and manufacturing experience, we continue to develop and produce the latest in innovative door technology.

Our Spirit series fabric roll-up doors provide high speed operation, high cycle life and minimal maintenance for outstanding durability and performance.

Featuring a simple "no tools" breakaway bottom bar reset system and tight clearance design, Spirit doors maintain a clean streamlined appearance while providing worry-free operation over hundreds of thousands of cycles.

Marathon: high performance, lower operational costs, greater value.

HIGH PERFORMANCE DOORS FOR THE LONG RUN

Marathon Doors | An ASI Technologies, Inc. Company
5848 North 95th Court | Milwaukee, WI 53225
PHONE: 414.464.6200 | FAX: 414.464.9863 | TOLL-FREE: 800.558.7068
www.marathondors.com



MODEL 115

SPIRIT™ High Speed Interior Fabric Roll-Up Door

MODEL 115 POWER

DESIGN AND CONSTRUCTION

DOOR SIZES

- Up to: 12' wide x 14' high.

(Other smaller sizes available - consult factory.)

PANEL CONSTRUCTION

- Single-ply PVC impregnated polyester woven fabric.
- Two integral panel stiffeners.

OPERATION

Electric Operation:

- PLC control panel
- 2 speed operation.

open- up to 42"/sec.

close-21"/sec.

(Other operations available, consult factory.)

- In-line, high efficiency 3/4 h.p. electrical motor.
- NEMA-4 fiberglass control box.

PERFORMANCE FEATURES

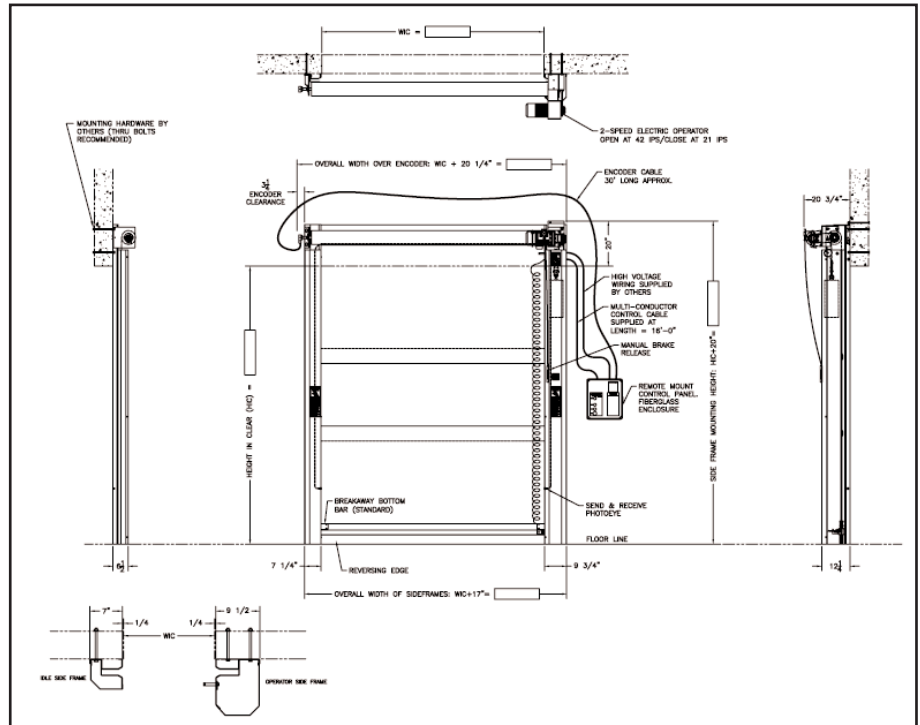
- Reversing edge for instant stop/reverse.
- Reversing photoeye.
- Breakaway bottom bar.

WARRANTY

- One year limited warranty on all components.

OPTIONS

- Pull cord activation.
- Remote mount push buttons.
- Additional photoeyes.
(Activation or reversing.)
- Radio control activation-single or multiple channel transmitter.
- Loop detector system activation.
- Motion detector.
- Barrel and operator shroud.
- Vision panel - 27" high across full width of panel.
- Stainless steel package.
- Pre-announce to close kit
(light/alarm/or combo).



**:00 Seconds
BREAKAWAY**



**:15 Seconds
RESET**



**:30 Seconds
DRIVE THRU**

HIGH PERFORMANCE DOORS FOR THE LONG RUN

Marathon Doors | An ASI Technologies, Inc. Company
5848 North 95th Court | Milwaukee, WI 53225

PHONE: 414.464.6200 | FAX: 414.464.9863 | TOLL-FREE: 800.558.7068

www.marathondoors.com