

■ **EXCEPTIONAL VALUE**

The Marathon three hour U.L. rated sliding fire door features a unitized high strength, 20 gauge galvanized steel shell panel design, reinforced by a 16 gauge internal steel C-channel and heavy steel backing plates located internally at all hardware locations.

■ **INNOVATIVE CONSTRUCTION**

Our inventive bottom guidance system positively maintains the door's position ensuring fast, controlled operation and minimized gasket wear.

■ **TIGHTEST SEAL**

Adjustable pull-in device for in-field adjustments. Maintains positive pull-in and ensures tight sealing.

■ **INSULATION**

With your choice of 3", R-18 or 5" R-30 rated insulation, the 110 provides exceptional energy savings and while also meeting EPS U.L. requirements.

■ **COMPLETE DOOR SYSTEM**

Marathon provides a complete door system from panel choice, frame design, hardware selection, and interlocking design, to complement any environment. This ensures an uninterrupted process in completing your project by maintaining a single source relationship.

■ **UNMATCHED QUALIFICATIONS**

With over 45 years of combined experience, our professional sales consulting team will ensure your mission-critical requirements, while maintaining our uncompromising dedication to quality and value added service.

MODEL 110

Single Horizontal Sliding U.L. Rated 3-Hour Fire Door
Manual or High Speed Hydraulic Power Operated
MODEL 110



Power Operated Model Shown

Innovative Design. Superior Performance. Exceptional Value.

MARATHON HIGH PERFORMANCE DOORS, DESIGNED FOR THE LONG RUN.

Marathon's revolutionary U.L. rated high speed sliding fire door system is designed, engineered and precision manufactured with over 20 years of experience partnering with industrial leaders and architects across the country.

Using cutting-edge technology and exacting criteria for quality, Marathon Fire Doors have surpassed market criteria for quality, performance and U.L. compliance.

Available with manual operation or with our patented hydraulic power system for speed and long life, the Marathon 3 hr. rated sliding fire door is ideal for a variety of commercial and industrial applications.

Marathon: high performance, lower operational costs, greater value.

HIGH PERFORMANCE DOORS FOR THE LONG RUN

Marathon Doors | An ASI Technologies, Inc. Company
5848 North 95th Court | Milwaukee, WI 53225
PHONE: 414.464.6200 | FAX: 414.464.9863 | TOLL-FREE: 800.558.7068
www.marathondors.com



MODEL 110

Single Horizontal Sliding U.L. Rated 3-Hour Fire Door
Manual or High Speed Hydraulic Power Operated

MODEL 110

DESIGN AND CONSTRUCTION

DOOR SIZES

- Up to 12'-4" wide x 10'-8" high.
(For other available sizes, consult factory.)

PANEL CONSTRUCTION

- Unitized design.
- Shell constructed of 20 gauge galvanized steel. (Stainless steel available as an option.)
- 16 gauge formed galvanized steel capping.
- 16 gauge inner C-channel.

OPERATION

- Manual or hydraulic operation.
- Hydraulic:
Open/close at 25" per second.

HYDRAULIC SYSTEM

- 1 h.p. totally enclosed, low speed, high torque motor.
- NEMA 4 rated enclosure.

PERFORMANCE FEATURES

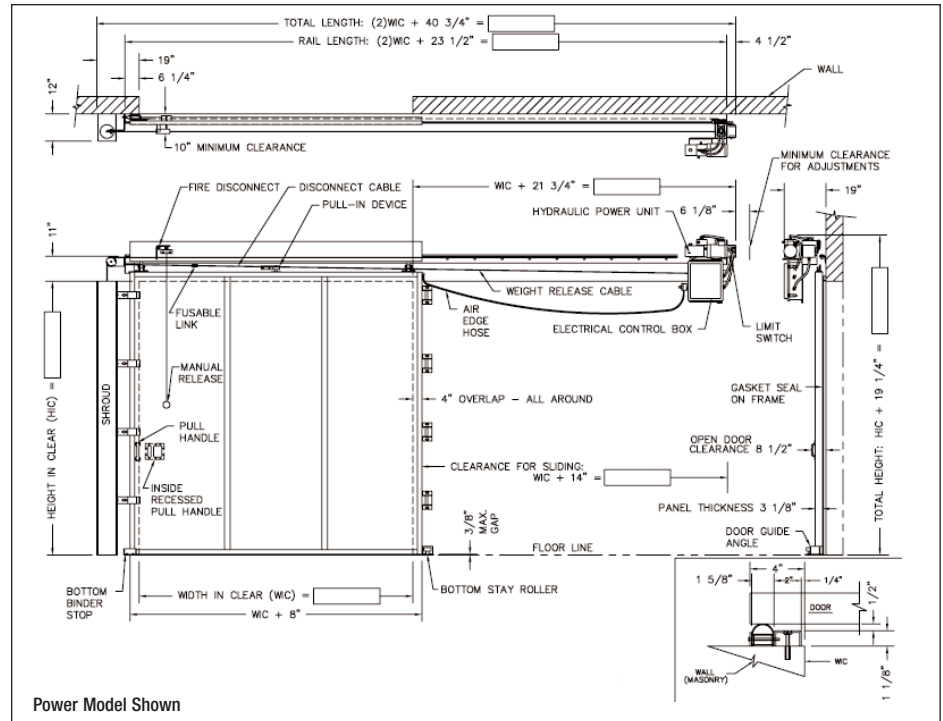
- Reversing edge for instant stop/reverse.
- Weighted cable operated closing system with fuse link disconnect and latch releasing mechanism.

OPTIONS

- Partial opening (with two push button switches to permit partial door opening and automatic closing). Adjustable time delay included.
- Extra push button actuators or pull cords (one pair std.).
- Photoeyes - actuator or reversing.
- Radio control
- Loop detector system.
- Time delay close.
- Metal hood (exterior application).
- Color (consult factory).
- Remote mount hydraulic operator.
- Future power.
- Interface into automated alarm systems.
- 400 series stainless steel door panel.
- Fusible link disconnect on opposite side of wall.

WARRANTY

- Five years on hydraulic operator.
- One year limited warranty on all components.



PATENTED HYDRAULIC OPERATOR
For speed and superior performance.

HIGH PERFORMANCE DOORS FOR THE LONG RUN

Marathon Doors | An ASI Technologies, Inc. Company
5848 North 95th Court | Milwaukee, WI 53225
PHONE: 414.464.6200 | FAX: 414.464.9863 | TOLL-FREE: 800.558.7068
www.marathonddoors.com